

COPY RIGHT & CONFIDENTIAL
THIS DOCUMENT IS THE EXCLUSIVE PROPERTY OF BEML & CONTAINS CONFIDENTIAL INFORMATION. THIS DOCUMENT OR ITS CONTENTS SHALL NOT BE USED, REPRODUCED OR DISCLOSED IN WHOLE OR IN PART, WITHOUT PRIOR WRITTEN PERMISSION OF BEML. THIS DOCUMENT & ALL ITS COPIES SHALL BE RETURNED TO BEML ON DEMAND
DRAWING RELEASED FROM PLM, PHYSICAL SIGNATURE NOT REQUIRED

MACHINING DEVIATIONS FOR LINEAR DIMENSIONS	RANGE	0 - 6	6 - 30	30 - 120	120 - 315	315-1000	1000-2000	2000-4000	ABOVE 4000	RA
	TOLERANCE	±0.1	±0.2	±0.3	±0.5	±0.8	±1.2	±2	±3	~

FOR DIMENSIONAL TOLERANCES OF SHEET METAL PARTS AND WELDED STRUCTURES, REFER STD. RD-227

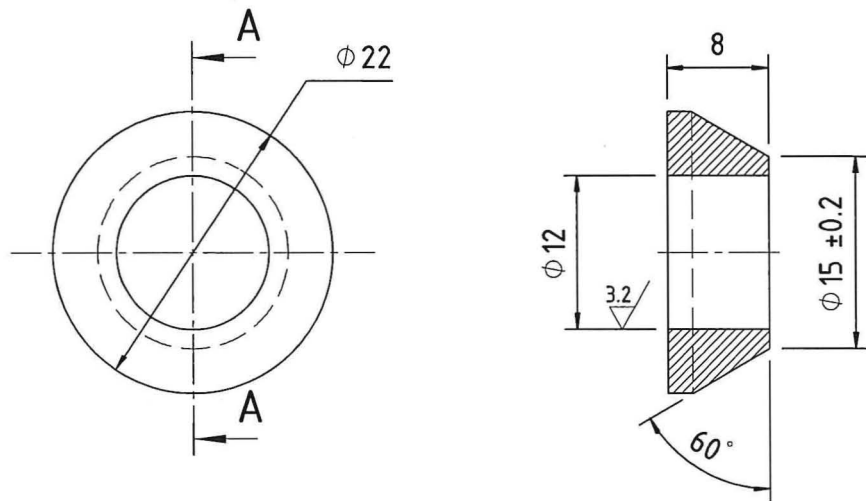
UNSPECIFIED TOLERANCE FOR LINEAR AND ANGULAR DIMENSIONS REF. IS 2102 (PT-1) (MEDIUM)

QUALITY OF WELD JOINTS REF. RD 230 MEDIUM

VALUES OF SURFACE TEXTURE SHALL BE AS PER COMPANY STD DS. 1012.C.

WELDING SHALL BE CARRIED OUT AS PER IS: 9595-96

STATUS: **PROTO/PILOT/PRODUCTION**



SECTION A-A

UN CONTROLLED COPY

NOTE:-

1. REMOVE ALL SHARP EDGES AND BURRS

N1	0.025	N2	0.05	N3	0.1	N4	0.2	N5	0.4	N6	0.8	N7	1.6	N8	3.2	N9	6.3	N10	12.5	N11	25	N12	50	GRADE No.	VALUE	SYMBOL	SURFACE ROUGHNESS
SL.No.	QTY	PART / STOCK No.	DESCRIPTION	SIZE (mm)	COMPANY STD./I.S	Wt. (Kg)																					
MATERIAL																											
PRODUCT							BMRCL METRO CARS																				
REF DRG																											
MATERIAL							AISI 304																				
HEAT TREAT.																											
SURFACE TREAT.																											
TITLE							COLLAR-B, LVA																				
APPD							MS <i>MS</i> 21.08.19																				
REVD							DB <i>DB</i> 19.08.19																				
CHKD							DB <i>DB</i> 17.08.19																				
DRWN							JC <i>C.J.</i>																				
SCALE							2:1																				
SHEET							1 OF 1																				
Wt (Kg)							0.012																				
DRG No.							926-84104																				
ALT							0																				
BEML LIMITED							NEW FRONTIERS, NEW DEANS																				
ALT.NO.							ECN NO/CHANGES																				
DATE																											
BY																											
CHKD																											
APPD																											